

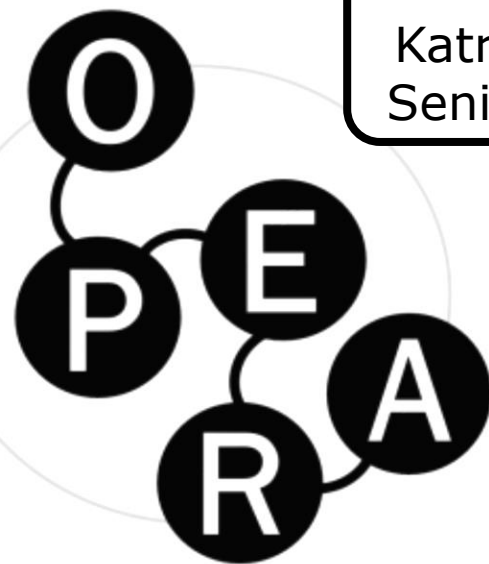


$$f(x+\Delta x) = \sum_{i=0}^{\infty} \frac{(\Delta x)^i}{i!} f^{(i)}(x)$$

$$\int_a^b \epsilon \Theta + \Omega f \delta e^{i\chi^2} = \{2.71828182\}$$

DTU Skylab - Student innovation & entrepreneurship

Welcome by
Katrine Krogh Andersen, DTU
Senior VP & Dean of Research



OPERA – Open Research Analytics

Welcome

- Open Research/Open Science is an important set of global ambitions
 - Promoted by the EU - as well as others
 - Shared by the Danish government and universities - as well as others
 - And shared by this university
- We need analytics to understand – where we are - and in which direction we're moving
- Open Research Analytics will help us guide and incentivise our implementation efforts



Our mission and yours

DTU was founded in 1829 by Hans Christian Ørsted, known for his discovery of electromagnetism.

The university's mission was - and continues to be - to use natural and technical sciences to benefit society.

Aligning rather well with current visions, like the EU's:



Open Innovation, Open Science, Open to the World
- a vision for Europe

Open Science efforts @ DTU



At DTU, we have worked with:

- Research Integrity
 - Underpinning everything
- Data Management
 - Providing the basis for:
- Open (FAIR) Research Data
 - And:
- Open Access to Publications



FAIR Data efforts @ DTU



1

Technical University of Denmark



Policy of the Retention of Primary Materials and Data

1. Preamble

The Technical University of Denmark (DTU) shall be known and respected globally as a leading technical university that produces excellent research meeting the highest quality standards. Meeting the highest standards for research excellence means that all research associated with DTU must strive for trustworthiness and high integrity; this includes honesty, transparency and accountability.

FAIR Data efforts @ DTU

1

Technical University of Denmark

Policy of the Technical University of Denmark

1. Preamble

The Technical University of Denmark is a leading technical university. Meeting the needs of research associations includes honesty

2



Office for Innovation and Sector Services
Bibliometrics and Data Management

Data Management Plan



FAIR Data efforts @ DTU



1

Technical Univer

2



Office
Bibli

Policy of th

1. Preamble

The Technical U
leading technical
standards. Meeti
research associa
includes honesty

Data
Plan

3

DTU Data

Discover research from **Technical University of Denmark** ▾



+ Follow

NEW

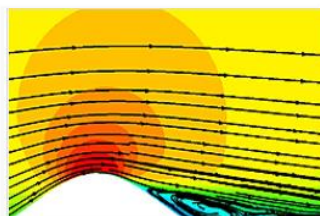
POPULAR

CATEGORIES

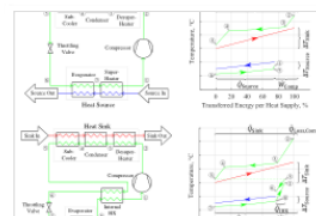
SEARCH 🔍



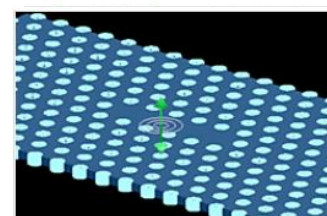
Supporting data - Effects of the cooperative interaction on the diff...
Ivano Eligio Castelli ▾ 01/08/2018



Flow field over a Gaussian hill by
'RANS simulation
'Ju Feng ▾ 07/11/2018

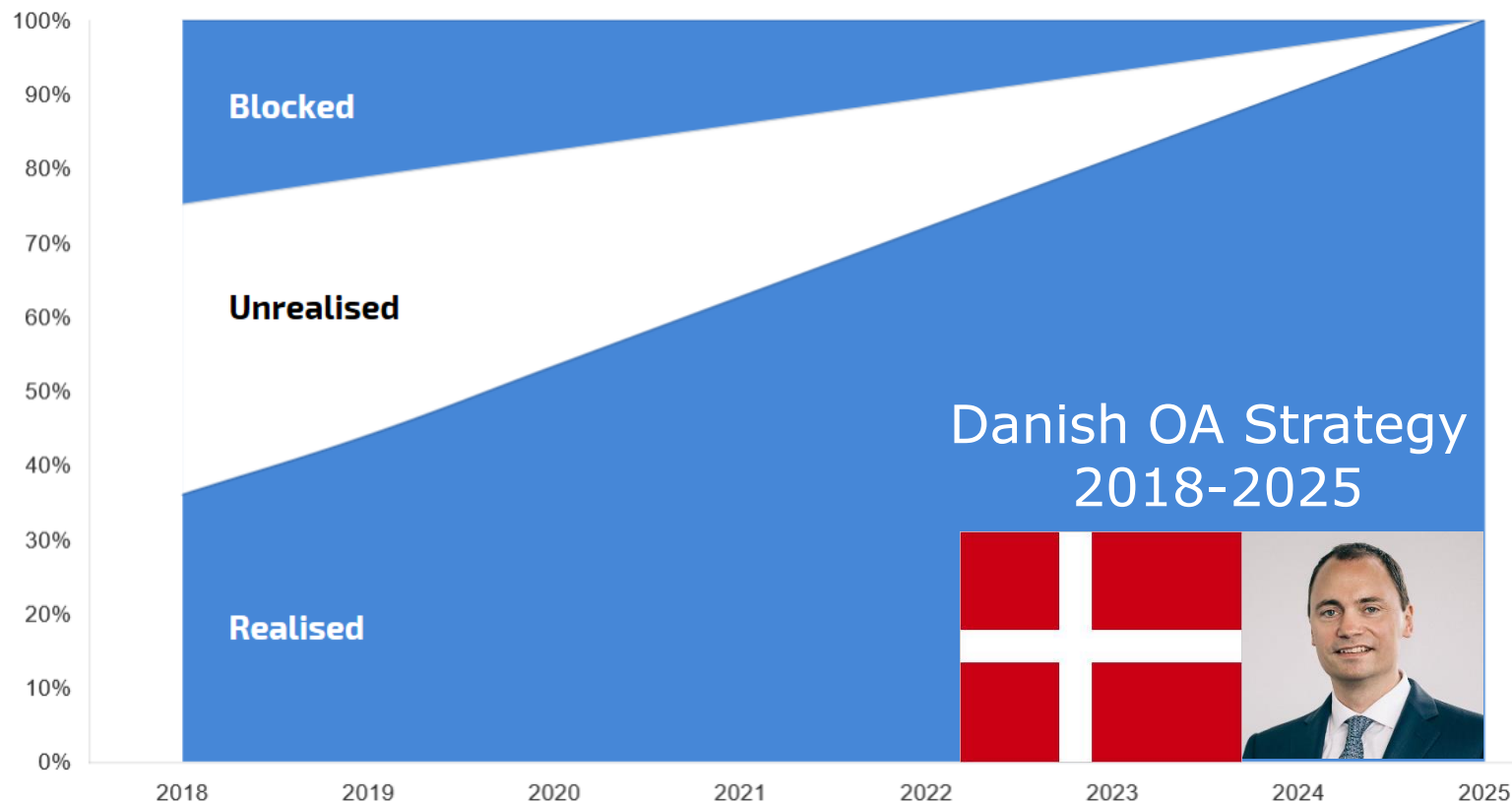


Numerical models for the design and
analysis of heat pumps with zeotro...
Benjamin Zühlsdorf ▾ 07/12/2018



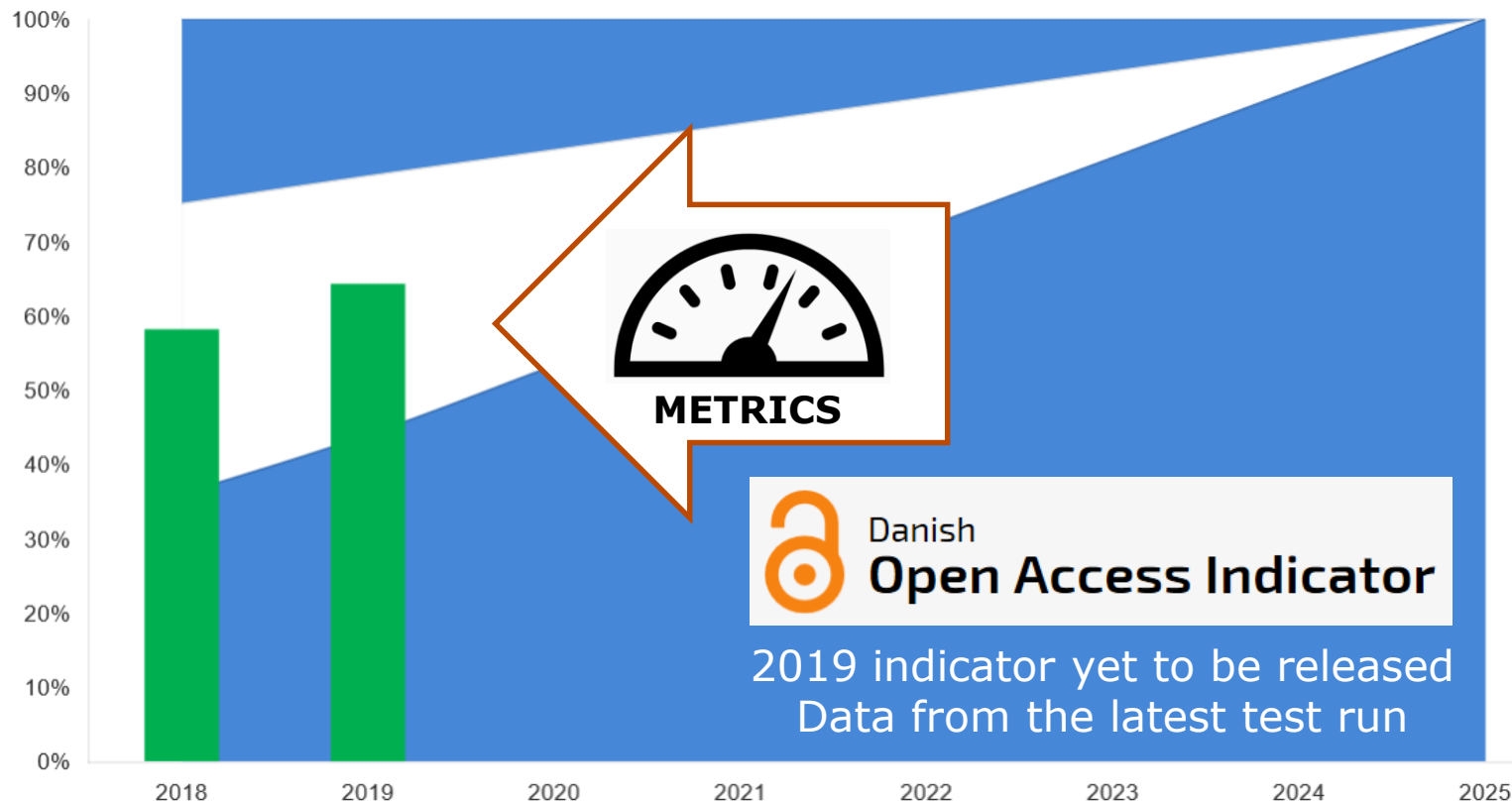
Supporting Material: 3DFDTD L5/L9
Cavity, Lumierical FDTD-Solutions...
Lars Hagedorn Frandsen 10/10/2018

Open Access efforts @ DTU



■ Realised ⓘ Explanation

Show: ☐ Details ☐ 2015-2017



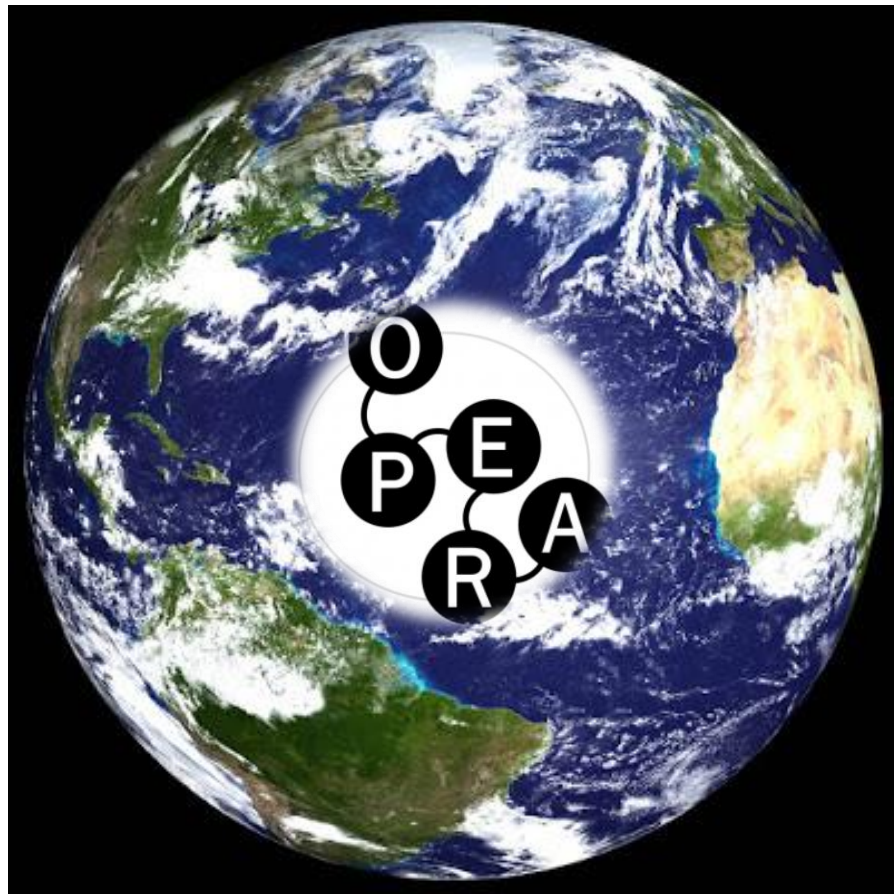
Open Research Analytics

Again

- We need analytics to understand
 - where we are - and in which direction we're moving

And

- Analytics & metrics are truly useful when they are:
 - Relevant and telling,
open and responsible,
and of high quality
and integrity.





2016 visit by Carlos Moedas, EU, in front of DTU's Open Science exhibition



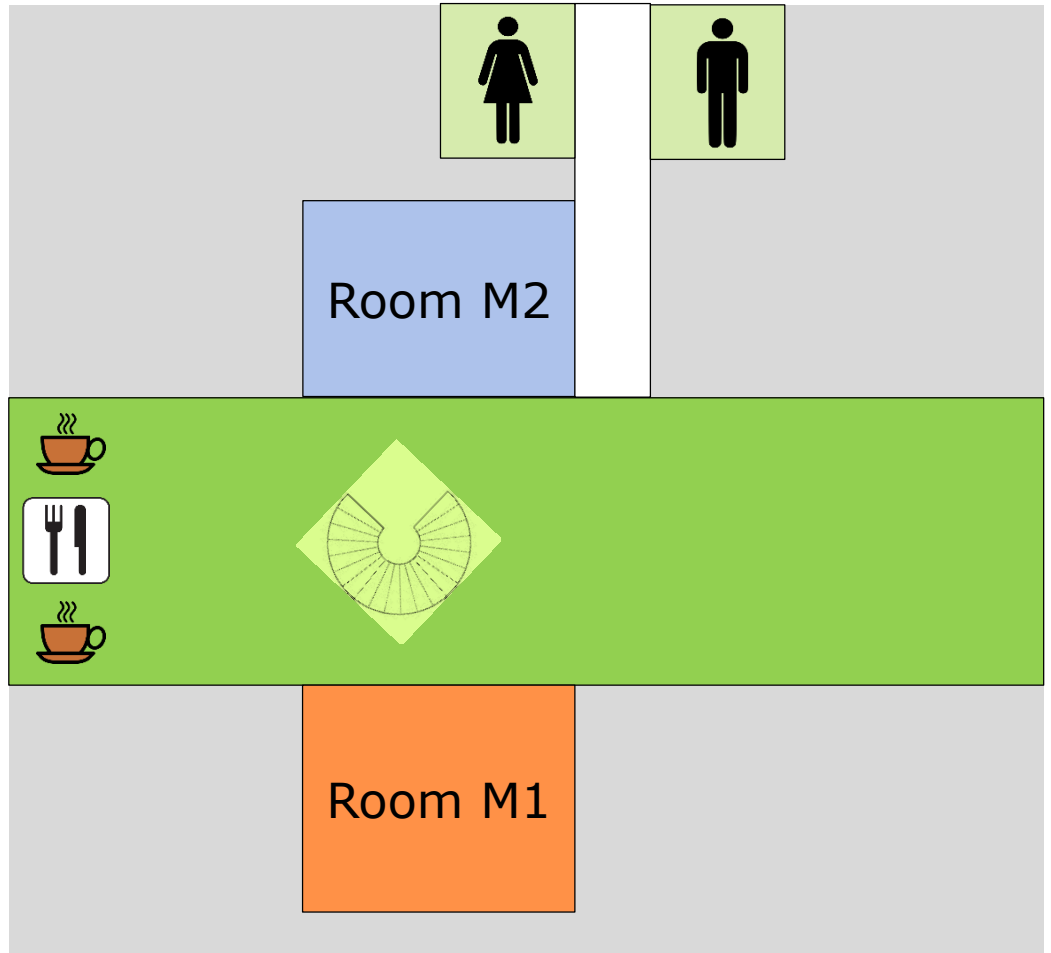
Welcome & practicalities

Mogens Sandfær

OPERA Project Director



Meeting rooms etc.



Today's program

09:30-11:15 Welcome & Keynotes
Room M1

11:15-11:30 Coffee & Tea

Data & Systems
Room M1

Soc. Sci. Hum
Room M2

13:00-13:45 Lunch

Networks & Viz
Room M1

Open Science
Room M2

15:15-15:30 Coffee & Tea

15:30-16:30 Keynote & Wrap-up
Room M1



Please make yourself heard
Your input will be appreciated
We all look forward to



and please use **#deffopera**



Over to the WP2 lead,
AAU professor
David Budtz Pedersen
Today's workshop
moderator